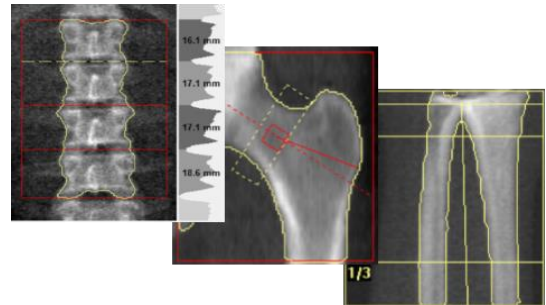


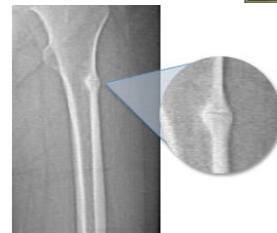
Introducing our Latest Bone Density & Body Composition Technology

Inner West Allied Health Centre is pleased to offer dual energy X-ray absorptiometry (DXA) scans – the gold standard for Bone Mineral Density (BMD) and Body Composition Assessment using the next generation DXA system from Hologic called the Horizon™ DXA.

Osteoporosis Diagnosis: With our DXA technology, we hope to increase the number of patients who should receive a BMD scan, especially as osteoporosis often goes undiagnosed until a person experiences their first fracture – which triggers a 50% chance of them experiencing another fracture.



Atypical Femoral Fracture (AFF) Assessment: Your patients on long-term bisphosphonate therapies are at high risk of AFFs. These can occur spontaneously and can have devastating outcomes. Sending your patients for our 15-second scan of the entire femur can identify possible early indicators.



Body Composition Assessment: The system can also measure whole body fat, lean and bone mass which allows tracking patient progress through interventions, for:

- Weight management
- Physical rehabilitation
- Falls & fractures prevention
- Bariatric Surgery
- Anorexia treatment
- Sarcopenia management

Results Reporting: Our DXA system provides you with an easy-to-read report on your patients' bone health and body/organ fat distribution. The graph on the right shows an example of how body composition changes can be tracked over time.

Note: Medicare rebates are available for patients referred on EPC. Health rebates available. For further information on our DXA offering, please call us on 0295183400.

